

User guide

Thank you for purchasing a Sony Ericsson Naite J105/J105a. For additional phone content, go to www.sonyericsson.com/fun. Register now to get free online storage and special offers at www.sonyericsson.com/myphone. For an extended User guide and product support, go to www.sonyericsson.com/support. **Please read the Important information before you use your mobile phone.**

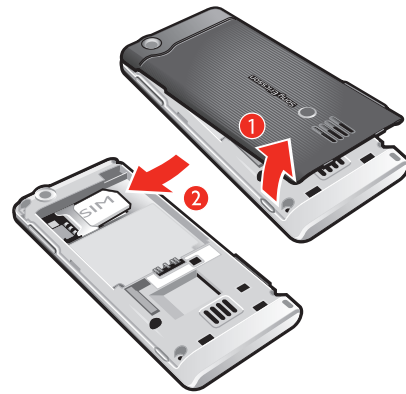
Instruction symbols

- These symbols may appear in the User guide:
- Note
 - Tip
 - Warning
 - > Use a selection or navigation key to scroll and select. See *Navigation* on page 10.

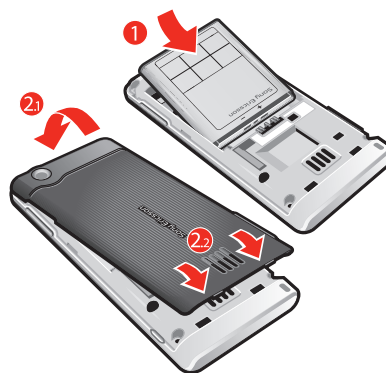
Getting started

Assembly
Before you start using your phone, you need to insert a SIM card and the battery.

To insert the SIM card



To insert the battery



- 1 Insert the battery with the label side up and the connectors facing each other.
- 2 Attach the battery cover.

Turning on the phone

To turn on the phone



- 1 Press and hold down **[Power]**.
 - 2 Enter your SIM card PIN (Personal Identification Number), if requested, and select **OK**.
 - 3 Select a language.
 - 4 Follow the instructions that appear.
- ⚡ If you want to correct a mistake when you enter your PIN, press **[C]**.

Help

In addition to this User guide, an extended User guide, Feature guides and more information are available at www.sonyericsson.com/support. Help and information are also available in your phone.

To access the User guide

- Select **Menu > Settings > User help > User guide**.

To view tips and tricks

- Select **Menu > Settings > User help > Tips and tricks**.

To view information about functions

- Scroll to a function and select **Info**, if available. In some cases, **Info** appears under **Options**.

To view the phone status

- Press the volume key. Phone, memory and battery information is shown.

Charging the battery

The phone battery is partly charged when you buy it.

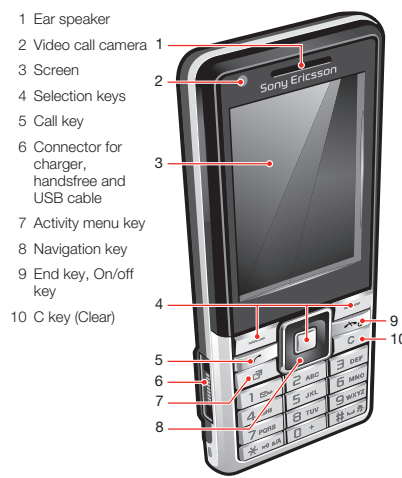
To charge the battery



- 1 Connect the charger to the phone. It takes approximately 2.5 hours to fully charge the battery. Press a key to view the screen.
 - 2 Remove the charger by tilting the plug upwards.
- ⚡ You can use your phone while it is charging. You can charge the battery at any time and for more or less than 2.5 hours. You can interrupt the charging without damaging the battery.

Naite

Phone overview



Navigation

To access the main menu

- When **Menu** appears on the screen, press the centre selection key to select **Menu**.
- If **Menu** does not appear on the screen, press **[Menu]** and then press the centre selection key to select **Menu**.

To navigate the phone menus



- Press the navigation key **[Up]**, **[Down]**, **[Left]** or **[Right]** to move through the menus.

To end a function

- Press **[End call]**.

To return to standby

- Press **[Power]**.

To delete items

- Press **[C]** to delete items such as numbers, letters, pictures and sounds.

Shortcuts

You can use keypad shortcuts to go directly to functions from standby.

To use navigation key shortcuts

- Press **[Up]**, **[Down]**, **[Left]** or **[Right]** to go directly to a function.

To edit a navigation key shortcut

- 1 Select **Menu > Settings > General > Shortcuts**.
- 2 Scroll to an option and select **Edit**.
- 3 Scroll to a menu option and select **Shortc...**

Activity menu

The activity menu gives you quick access to:

- **New events** – missed calls and new messages.
- **Running apps** – applications that are running in the background.
- **My shortcuts** – quick access to your favourite functions to access them quickly.
- **Internet** – quick access to the Internet.

To open the activity menu

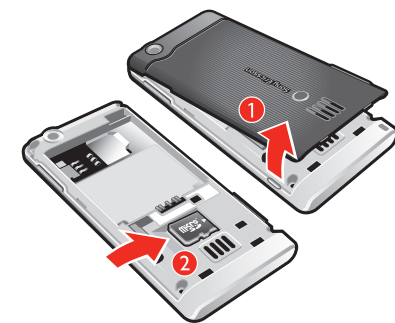
- Press **[Activity]**.

Memory card

⚡ You may have to purchase a memory card separately.

Your phone supports a microSD™ memory card adding more storage space to your phone. It can also be used as a portable memory card with other compatible devices. You can move content between a memory card and the phone memory. See *Handling content in the phone* on page 22.

To insert a memory card



- Remove the battery cover and insert the memory card with the gold-coloured contacts facing down.

Entering text

You can use multitap text input or T9™ Text Input **T9** to enter text. The T9 Text Input method uses a built-in dictionary.

To change writing language

- When you enter text, press and hold down **[Language]**.

To change text input method

- When you enter text, press and hold down **[Text input]**.

To shift between capitals and lower-case letters

- When you enter text, press **[Shift]**.

To enter numbers

- When you enter text, press and hold down **[0]** – **[9]**.

To enter full stops and commas

- When you enter text, press **[1]**.

To enter a symbol

- 1 When you enter text, select **Options > Add symbol**.
- 2 Scroll to a symbol and select **Insert**.

To enter text using T9™ Text Input

- 1 Select, for example, **Menu > Messaging > Write new > Message**.
- 2 If **T9** is not displayed, press and hold down **[Text input]** to change to T9 Text Input.
- 3 Press each key only once, even if the letter you want is not the first letter on the key. For example, to write the word "Jane", press **[5]**, **[2]**, **[6]**, **[3]**. Write the whole word before looking at the suggestions.
- 4 Use **[Left]** or **[Right]** to view suggestions.
- 5 Press **[Accept]** to accept a suggestion and add a space.

To enter text using multitap text input

- 1 Select, for example, **Menu > Messaging > Write new > Message**.
- 2 If **T9** is displayed, press and hold down **[Multitap]** to change to multitap text input.
- 3 Press **[2]** – **[9]** repeatedly until the desired letter appears.
- 4 When a word is written, press **[Space]** to add a space.

To add words to the built-in dictionary

- 1 When you enter text using T9 Text Input, select **Options > Spell word**.
- 2 Write the word using multitap text input and select **Insert**.

Calling

Making and receiving calls

You need to turn on your phone and be within range of a network.

To make a call

- 1 Enter a phone number (with international country code and area code, if applicable).
 - 2 Press **[Call]**.
- ⚡ You can call numbers from your contacts and call list. See *Contacts* on page 16, and *Call list* on page 16.

To end a call

- Press **[End call]**.

To make international calls

- 1 Press and hold down **[0]** until a "+" sign appears.
- 2 Enter the country code, area code (without the first zero) and phone number.
- 3 Press **[Call]**.

To answer a call

- Press **[Call]**.

To reject a call

- Press **[End call]**.

To change the ear speaker volume during a call

- Press the volume key up or down.

To mute the microphone during a call

- 1 Press and hold down **[Mute]**. **[Mute]** appears.
- 2 Press and hold down **[Mute]** again to resume.

To turn on the loudspeaker during a call

- Select **SpkrOn**. **[SpkrOn]** appears.

⚡ Do not hold the phone to your ear when using the loudspeaker. This could damage your hearing.

Emergency calls

Your phone supports international emergency numbers, for example, 112 or 911. You can normally use these numbers to make emergency calls in any country, with or without the SIM card inserted, if you are within range of a network.

⚡ In some countries, other emergency numbers may also be promoted. Your network operator may therefore have saved additional local emergency numbers on the SIM card.

To make an emergency call

- Enter 112 (the international emergency number) and press **[Call]**.

To view your local emergency numbers

- 1 Select **Menu > Contacts**.
- 2 Scroll to **New contact** and select **Options > Special numbers > Emergency nos.**

Call list

You can view information about answered **[Call]**, dialled **[Call]** and missed or rejected **[Call]** calls.

To call a number from the call list

- 1 Press **[Call list]** and scroll to a tab.
- 2 Scroll to a name or a number and press **[Call]**.

Contacts

You can save names, phone numbers and personal information in **Contacts**. Information can be saved in the phone memory or on the SIM card.

⚡ You can synchronise your contacts using the *Sony Ericsson PC Suite*.

To add a phone contact

- 1 Select **Menu > Contacts**.
- 2 Scroll to **New contact** and select **Add**.
- 3 Enter the name and select **OK**.
- 4 Scroll to **New number** and select **Add**.
- 5 Enter the number and select **OK**.
- 6 Select a number option.
- 7 Scroll between the tabs and add information to the fields.
- 8 Select **Save**.

Calling contacts

To call with Smart search

- 1 Press **[0]** – **[9]** to enter a sequence of (at least two) digits. All entries which match the sequence of digits or corresponding letters are shown in a list.
- 2 Scroll to a contact or a phone number and press **[Call]**.

To turn on or off Smart search

- 1 Select **Menu > Settings > Calls > Smart search**.
- 2 Select an option.

Imaging

You can take photos and record video clips to view, save and send. You find saved photos and video clips in **Media** and in **File manager**.

Using the camera

- Select **Menu > Camera**.

Viewfinder and camera keys



- 1 Zoom indicator

- 2 Zoom in or out
- 3 Take photos/Record video
- 4 Select still camera or video camera
- 5 Brightness indicator
- 6 Brightness
- 7 Self-timer
- 8 Night mode
- 9 Camera: **Shoot mode**
Video: **Video length**
- 10 Camera key guide

To take a photo

- 1 Activate the camera and press the navigation key to scroll to **[Camera]**.
- 2 Press the centre selection key to take a photo. The photo is automatically saved.
- 3 Press **Back** to return to the viewfinder to take another photo.

To record a video clip

- 1 Activate the camera and press the navigation key to scroll to **[Video]**.
- 2 Press the centre selection key to start recording.
- 3 To stop recording, press the centre selection key. The video clip is automatically saved.
- 4 Press **Back** to return to the viewfinder to record another video clip.

To view photos

- 1 Activate the camera and press the navigation key to scroll to **[Media]**.
- 2 Select **Options > View all photos**
- 3 Press **[Left]** or **[Right]** to scroll to a photo.

To view video clips

- 1 Activate the camera and press the navigation key to scroll to **[Media]**.
- 2 Select **Options > View all clips**.
- 3 Press **[Left]** or **[Right]** to scroll to a video clip and press the centre selection key. Video clips are indicated by **[Video]** in the upper left corner.

Music

You can listen to music, audio books and podcasts. Use the *Media Go™* application to transfer content to and from your phone. For more information, see *Transferring content to and from a computer* on page 25.

Music player

To play music

- 1 Select **Menu > Media > Music**.
- 2 Browse by category using the navigation key.
- 3 Scroll to a title and select **Play**.

To stop playing music

- Press the centre selection key.

To fast forward or rewind

- Press and hold down **[Fast forward]** or **[Rewind]**.

To move between tracks

- Press **[Fast forward]** or **[Rewind]**.

To change the volume

- Press the volume key up or down.

PlayNow™

When you select **PlayNow™** you enter **PlayNow™** arena, where you can download music, games, ringtones, themes and wallpapers. You can preview or listen to content before you purchase and download it to your phone. If you cannot use **PlayNow™** and **PlayNow™** arena, see *I cannot use Internet-based services* on page 35.

⚡ This service is not available in all countries.

For extended functionality, you can also access the **PlayNow™** arena Web shop on a computer from www.playnow-arena.com. For more information, go to www.sonyericsson.com/support to read the *PlayNow™* arena Feature guide.

To use PlayNow™

- 1 Select **Menu > PlayNow™**.
- 2 Scroll through **PlayNow™** arena and follow the instructions to preview and purchase content.

Radio

⚡ Do not use your phone as a radio in places where this is prohibited.

To turn on the radio

- 1 Connect a handsfree to the phone.
- 2 Select **Menu > Entertainment > Radio**.

Saving channels

You can save up to 20 preset channels.

To save channels automatically

- Select **Options > Auto save**.

To switch between saved channels

- Press **(F5)** or **(F6)**.

Transferring and handling content

You can transfer and handle content such as pictures and music.

- You are not allowed to exchange some copyright-protected material.  identifies a protected item.

Handling content in the phone

You can use **File manager** to handle content saved in the phone memory or on a memory card. Tabs and icons in **File manager** show where the content is saved. If the memory is full, delete some content to create space.

To select more than one item in a folder

- 1 Select **Menu > Organiser > File manager**.
- 2 Scroll to a folder and select **Open**.
- 3 Select **Options > Mark > Mark several**.
- 4 For each item you want to mark, scroll to the item and select **Mark**.

To move items between the phone memory and the memory card

- 1 Select **Menu > Organiser > File manager**.

- 2 Find an item and select **Options > Manage file > Move**.

- 3 Select **Memory card or Phone**.

- 4 Scroll to a folder and select **Open**.

- 5 Select **Paste**.

Sending content to another phone

You can send content, for example, in messages or using Bluetooth™ wireless technology.

To send content

- 1 Scroll to an item and select **Options > Send**.

- 2 Select a transfer method.

- Make sure the receiving device supports the transfer method you select.

Using a USB cable

You can connect your phone to a computer with a USB cable. If you are using a PC, you are asked to install PC Companion the first time you connect.

- You may have to purchase a USB cable separately.

- Only use a USB cable supported by your phone.

PC Companion

PC Companion lets you:

- Explore content in your phone.
- Use your phone as a modem.

- Install PC Software used to synchronise, transfer and back up phone content.

- For more information, go to www.sonyericsson.com/support to read Feature guides.

To install PC Companion

- 1 Connect your phone to a PC with a USB cable supported by your phone.

- 2 **Computer:** Follow the instructions.

To disconnect the USB cable safely

- Do not disconnect the USB cable when transferring content as this may corrupt the content.

- 1 **Computer:** Right-click the Safely Remove Hardware icon in *Windows Explorer*.

- 2 Select the drives you want to disconnect. Select **Stop**.

- 3 Wait for *Windows* to notify you that it is safe to remove the drive. Disconnect the USB cable.

Required operating systems

You need one of these operating systems to use Sony Ericsson PC software:

- Microsoft® Windows Vista™ Service Pack 2 or higher
- Microsoft® Windows XP, Service Pack 2 or higher

Drag and drop content

You can drag and drop content between your phone, a memory card and a computer in *Microsoft Windows Explorer*.

To drag and drop content

- 1 Connect your phone to a computer using a USB cable.

- 2 **Computer:** Wait until the phone memory and memory card appear as external disks in *Windows Explorer*.

- 3 Drag and drop selected files between the phone and the computer.

Transferring content to and from a computer

You can use Media Go™ to transfer media content between your phone and a computer.

- Media Go™ is available for download through PC Companion or from www.sonyericsson.com/support.

To transfer content using Media Go™

- 1 Connect the phone to a computer with a USB cable supported by your phone.

- 2 **Computer:** Select *Start/Programs/Sony/Media Go™*.

- 3 Select *Transfer to or from Device using Media Go™* and click **OK**.

- 4 Wait until the phone appears in Media Go™.

- 5 Move files between your phone and the computer in Media Go™.

Backing up and restoring

You can back up and restore contacts, the calendar, tasks, notes and bookmarks using the *Sony Ericsson PC Suite*. Before backing up and restoring, you need to install the *Sony Ericsson PC Suite* which is available through PC Companion or from www.sonyericsson.com/support. You can back up and restore contacts in your phone using a memory card. You can move content between the

memory card and the phone memory. See *Handling content in the phone* on page 22.

- Back up your phone content regularly to make sure you do not lose it.

To make a backup using the Sony Ericsson PC Suite

- 1 **Computer:** Start the *Sony Ericsson PC Suite* from *Start/Programs/Sony Ericsson/Sony Ericsson PC Suite*.

- 2 Follow the instructions in the *Sony Ericsson PC Suite* for how to connect.

- 3 Go to the backup and restore section in the *Sony Ericsson PC Suite* and make a backup of your phone content.

Messaging

To view a message from the inbox



- 1 Select **Menu > Messaging > Messages > Inbox**.

- 2 Scroll to the message and select **View**.

Sending messages

You can send messages from your phone. The maximum size of a standard text message is 160 characters including spaces if no other items are added to the message. If you enter more than 160 characters, a second message is created. Your messages are sent as one concatenated message.

To create and send a message

- 1 Select **Menu > Messaging > Write new > Message**.
- 2 Enter text. To add items to the message, press , scroll  and select an item.

Unlocking Key). Your PIN and PUK are supplied by your network operator.

To unlock the SIM card

- 1 When **PIN blocked** appears, enter your PUK and select **OK**.

- 2 Enter a new four-to-eight-digit PIN and select **OK**.

- 3 Re-enter the new PIN and select **OK**.

To edit the PIN

- 1 Select **Menu > Settings > General > Security > Locks > SIM protection > Change PIN**.

- 2 Enter your PIN and select **OK**.

- 3 Enter a new four-to-eight-digit PIN and select **OK**.

- 4 Re-enter the new PIN and select **OK**.

- If **Codes do not match** appears, you entered the new PIN incorrectly. If **Wrong PIN** appears, followed by **Old PIN**, you entered your old PIN incorrectly.

Troubleshooting

Some problems can be fixed using Update Service. Using Update Service on a regular basis will optimise the phone's performance. See *Update Service* on page 30. Some problems will require you to call your network operator.

For more support go to www.sonyericsson.com/support.

- 3 Select **Continue > Contacts look-up**.

- 4 Select a recipient and select **Send**.

- If you send a message to a group, you may be charged for each member. Contact your service provider for details.

Conversations

You can choose whether to view your messages in **Conversations** or **Inbox**. A messaging conversation shows all messaging communication between you and one of your contacts.

To view messages in Conversations

- Select **Menu > Messaging > Inbox > the Conversations tab**.

- Select **Menu > Messaging > Conversations** and select a conversation.

To send a message from Conversations

- 1 Select **Menu > Messaging**.

- 2 Select **Conversations**, or select **Inbox > the Conversations tab**.

- 3 Select a conversation.

- 4 Write a message and select **Send**.

Email

You can use standard email functions and your computer email address in your phone.

- You can synchronise your email using Microsoft® Exchange ActiveSync® application.

Before using email

You can use the Basic setup to check if settings are available for your email account or you can enter them manually. You can also receive settings at www.sonyericsson.com/support.

To create an email account for the first time

- 1 To start the basic setup, select **Menu > Messaging > Email**.

- 2 Follow the instructions to create the account.

- If you enter settings manually, you can contact your email provider for more information. An email provider could be the company that supplied your email address.

To write and send an email message

- 1 Select **Menu > Messaging > Email > Write new**.

- 2 Select **Add > Enter email address**. Enter the email address and select **OK**.

- 3 To add more recipients, scroll to **To:** and select **Edit**.

- 4 Scroll to an option and select **Add > Enter email address**. Enter the email address and select **OK**. When you are ready, select **Done**.

- 5 Select **Edit** and enter a subject. Select **OK**.

- 6 Select **Edit** and enter the text. Select **OK**.

- 7 Select **Add** and choose a file to attach.

- 8 Select **Continue > Send**.

To receive and read an email message

- 1 Select **Menu > Messaging > Email > Inbox > Options > Check new email**.

- 2 Scroll to the message and select **View**.

Internet

If you cannot use the Internet, see *I cannot use Internet-based services* on page 35.

To start browsing

- 1 Select **Search**.
- 2 Enter a Web address, a search phrase or the name of a bookmark.
- 3 Scroll to an item in the list and select **Go to** or **Search**.

To exit the browser

- Select **Options > Exit browser**.

More features

Flight mode

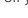
In **Flight mode** the network and radio transceivers are turned off to prevent disturbance to sensitive equipment. When the flight mode menu is activated you are asked to select a mode the next time you turn on your phone:

- **Normal mode** – full functionality
- **Flight mode** – limited functionality

To activate the flight mode menu

- Select **Menu > Settings > General > Flight mode > Continue > Show at startup**.

To select flight mode

- 1 When the flight mode menu is activated, turn off your phone.
- 2 Turn on your phone and select **Flight mode**.  appears.

Update Service

Your phone has software which you can update in order to improve performance. You can access Update Service using your phone or a PC with an Internet connection.

- Accessing Update Service using your phone is not possible in all countries/regions.

To view the current software in the phone

- 1 Select **Menu > Settings > General > Update service**.
- 2 Select **Software version**.

Update Service using a PC

You can update your phone using a USB cable and an Internet-connected PC.

- Make sure all personal data in your phone memory is backed up before you perform an update using a PC. See *Backing up and restoring* on page 25.

To use Update Service using a PC

- Go to www.sonyericsson.com/updateservice.

Alarms

You can set a sound or the radio as an alarm signal. The alarm sounds even if the phone is turned off. When the alarm sounds you can silence it or turn it off.

To set the alarm

- 1 Select **Menu > Alarms**.

- 2 Scroll to an alarm and select **Edit**.


- 3 Scroll to **Time:** and select **Edit**.

- 4 Enter a time and select **OK > Save**.

To set the alarm signal

- 1 Select **Menu > Alarms**.

- 2 Scroll to an alarm and select **Edit**.

- 3 Scroll to the  tab.

- 4 Scroll to **Alarm signal:** and select **Edit**.

- 5 Find and select an alarm signal. Select **Save**.

To silence the alarm

- When the alarm sounds, press any key.

- To repeat the alarm, select **Snooze**.

To turn off the alarm

- When the alarm sounds, press any key, then select **Turn off**.

Calendar

- You can synchronise your calendar with a computer calendar, with a calendar on the web or with a Microsoft® Windows Server® (Outlook®) application.

Appointments

You can add new appointments or reuse existing appointments.

To add an appointment

- 1 Select **Menu > Organiser > Calendar**.

- 2 Select a date.

- 3 Scroll to **New appointment** and select **Add**.

- 4 Enter the information and confirm each entry.

- 5 Select **Save**.

To edit an appointment

- 1 Select **Menu > Organiser > Calendar**.

- 2 Select a date.

- 3 Scroll to an appointment and select **View**.

- 4 Select **Options > Edit**.

- 5 Edit the appointment and confirm each entry.

- 6 Select **Save**.

To set when reminders should sound

- 1 Select **Menu > Organiser > Calendar**.

- 2 Select a date.

- 3 Select **Options > Advanced > Reminders**.

- 4 Select an option.

- A reminders option set in calendar affects a reminders option set in tasks.

Ringtones

To set a ringtone

- 1 Select **Menu > Settings > Sounds & alerts > Ringtones**.

- 2 Find and select a ringtone.

To turn off the ringtone

- Press and hold down   appears.

- The alarm signal is not affected.

Locks

SIM card lock

This lock only protects your subscription. Your phone will work with a new SIM card. If the lock is on, you have to enter a PIN (Personal Identity Number). If you enter your PIN incorrectly three times in a row, the SIM card is blocked and you need to enter your PUK (Personal

Identity Number).

- 4 Enter the number, including the international "+" sign and country code.
- 5 Select **Save**.

To select an MMS profile

- 1 Select **Menu > Settings > Connectivity > Message settings > Picture message**.

- 2 Select an existing profile or create a new one.

To set the message server address

- 1 Select **Menu > Settings > Connectivity > Message settings > Picture message**.

- 2 Scroll to a profile and select **Options > Edit**.

- 3 Scroll to **Message server** and select **Edit**.

- 4 Enter the address and select **OK > Save**.

I cannot synchronise or transfer content between my phone and my computer, when using a USB cable.

The cable or software has not been properly installed. Go to www.sonyericsson.com/support to read Feature guides which contain detailed installation instructions and troubleshooting sections.

Error messages

Insert SIM

There is no SIM card in your phone or you may have inserted it incorrectly.

See *To insert the SIM card* on page 3.

The SIM card connectors need cleaning. If the card is damaged, contact your network operator.

Insert correct SIM card

Your phone is set to work only with certain SIM cards.

Check if you are using the correct operator SIM card.

Wrong PIN/Wrong PIN2

You have entered your PIN or PIN2 incorrectly.

Enter the correct PIN or PIN2 and select **Yes**.

PIN blocked/PIN2 blocked

You have entered your PIN or PIN2 code incorrectly three times in a row.

To unlock, see *SIM card lock* on page 32.

No netw. coverage

- Your phone is in flight mode. See *Flight mode* on page 29.

- Your phone is not receiving any network signal, or the received signal is too weak. Contact your network operator and make sure that the network has coverage where you are.

- The SIM card is not working properly. Insert your SIM card in another phone. If this works, it is probably your phone that is causing the problem. Please contact the nearest Sony Ericsson service location.

Emerg. calls only

You are within range of a network, but you are not allowed to use it. However, in an emergency, some network operators allow you to call the international emergency number 112. See *Emergency calls* on page 15.

Legal information

</