

i-mate

Pocket PC

Setup Guide



For help or assistance please contact us.

In New Zealand, phone 777 free from your mobile or 0800 800 021

Phone +64 9 357 5198 from Overseas (except Australia)

Phone, toll free, +800 777 000 21 from Australia

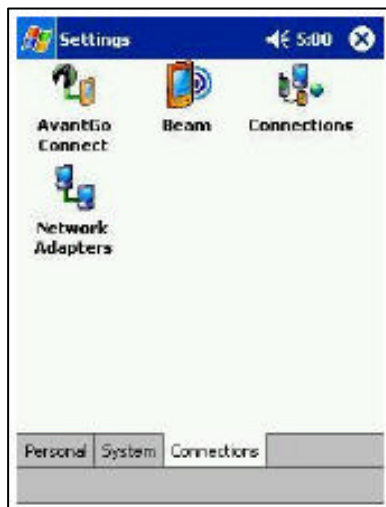
Or visit www.vodafone.co.nz

Setting up the GPRS Data Account

It is important this data account is created first.

This data account allows the phone (when used with a PC) to access the Internet via Vodafone. The email client also uses this.

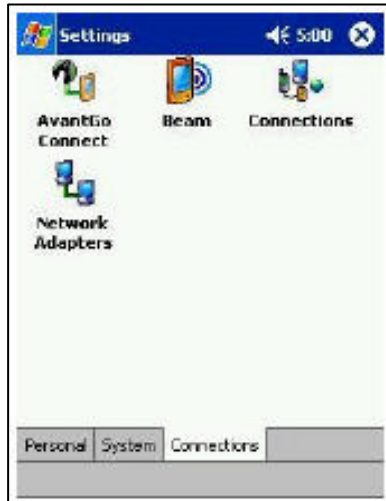
- Tap **Start > Settings > Connections** tab (bottom of screen) and **GPRS Setting icon**.
- Go to Authentication tab and tick **PAP authentication**
- Click on GPRS Setting tab and tick **Class B**. Click OK
- Click on the **Connections icon**



- Click on the **Advanced** button – **Network management**
- Under “programs that automatically connect to the Internet should connect using” tap on **New** – under **My ISP name** enter the name for the settings as: **Vodafone NZ**
- Then tap on the next Tab below called **Modem**, and then tap on **New**.
- Enter a name for the connection: **VFNZ Internet**
- In the **Select a modem field**, choose **Cellular Line (GPRS)** and tap **Next**.
- Enter Access point name as www.vodafone.net.nz and click next
- Username, Password and Domain fields should be blank.
- Tap on the Advance tab and on the TCIP/IP tab tick Use Server-assigned IP address. On the Servers tab tick Use Server-assigned as well.
- Follow the same instructions and create another Modem Connection called **VFNZ Gateway**, along with the access point name live.vodafone.com
- In the connection screen tap on the **setup my proxy server**.
- **“Tick”** both of the boxes and tap on **Advanced tab**
- in the **WAP** box please enter **172.30.38.3** and the **Port** should be **9201**
- **tap on OK**
- Programmes that automatically connect to a private network should connect using e.g. Vodafone and click ok.
- To connect to your VPN (Virtual Private Network) – you will require the server IP address, which should be obtained from your I.T. department. You must establish the GPRS Internet Connection first before dialling into your VPN.

Configuration

1. Tap **Start > Settings > Connections** tab (bottom of screen) and **GPRS Setting icon**.
2. Go to Authentication tab and tick **PAP authentication**
3. Click on GPRS Setting tab and tick **Class B**. Click OK
4. Click on the **Connections icon**



5. Click on the **Advanced** button – **Network management**
6. Under “programs that automatically connect to the Internet should connect using”
7. tap on **New** – under **My ISP name** enter the name for the settings as: **Vodafone NZ**
8. Then tap on the next Tab below called **Modem**, and then tap on **New**.
9. Enter a name for the connection: **VFNZ Internet**
10. In the **Select a modem field**, choose **Cellular Line (GPRS)** and tap **Next**.
11. Enter Access point name as www.vodafone.net.nz and click next
12. Username, Password and Domain fields should be blank.
13. Tap on the Advance tab and on the TCIP/IP tab tick Use Server-assigned IP address. On the Servers tab tick Use Server-assigned as well.
14. Follow the same instructions and create another Modem Connection called **VFNZ Gateway**, along with the access point name live.vodafone.com
15. In the connection screen tap on the **setup my proxy server**.
16. “Tick” both of the boxes and tap on **Advanced tab**
17. in the **WAP** box please enter **172.30.38.3** and the **Port** should be **9201**

18. tap on OK

- 19.** Programmes that automatically connect to a private network should connect using e.g. Vodafone and click ok.
- 20.** To connect to your VPN (Virtual Private Network) – you will require the server IP address, which should be obtained from your I.T. department. You must establish the GPRS Internet Connection first before dialling into your VPN.

To connect:

Go to start> settings > connection tab> connections icon and on the tasks tab select Manage existing connections. Tap and hold for one or two seconds on the name. You should see an option to delete or connect. Select connect.

Alternatively, go to start> internet explorer > enter URL address and click the green arrow.

How to setup your i-mate Pocket PC Email Access

Before starting this setup guide, please contact your email provider and ask them to provide the following details:

- Your full email address
- Server Type (POP3 or IMAP4)
- Incoming mail server

You will also need to have a GPRS plan setup on your Vodafone/TelstraClear account.

1. Go to the **Inbox** on your device; tap Accounts and then New Account. Enter your email address and click Next. When status is completed, click Next.

3. Select either Pop3 or IMAP4 (dependant on your email service provider.) and **name the account e.g. Your name or ISP. Click Next**

5. Untick Outgoing e-mail server requires authentication, and Require SSL connection. Tick only display messages from the last 3 days. From the drop down menu select either **POP3** or **IMAP4** (dependant on your email service provider.)

2. Enter your name and password and click Next.

4. Server Information: Enter the incoming mail address for your email account. For example pop3.****

Enter the outgoing mail address as **smtp.vodafone.net.nz** The Domain field should be blank. Tap options and set connection from drop down box. Click Next

6. Select get message headers only from drop down box, Tick include 2 K and click finish.

Please note:

To connect, you will also need to have a GPRS plan setup on your account. All new Prepay and On Account connections have the GPRS OMB plan by default. Other plans available to On Account customers.

See www.vodafone.co.nz